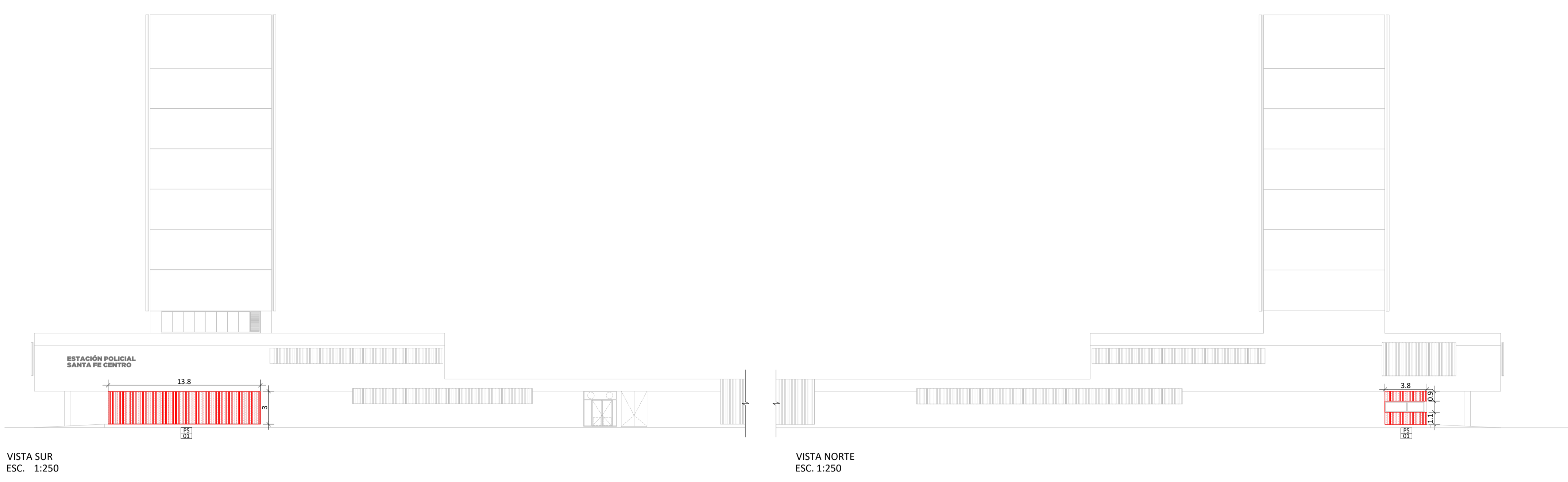
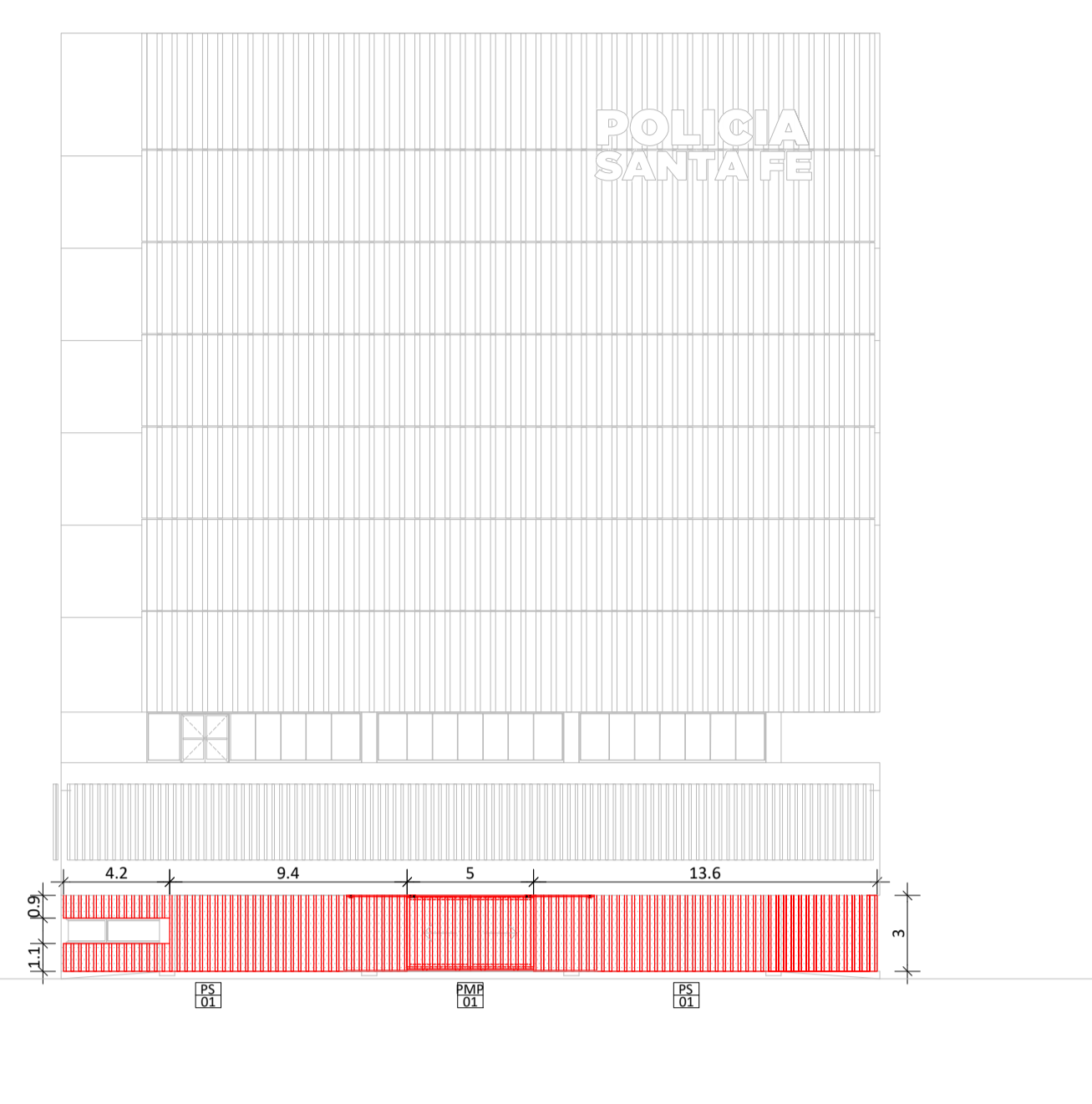


PLANTA BAJA
ESC. 1:250



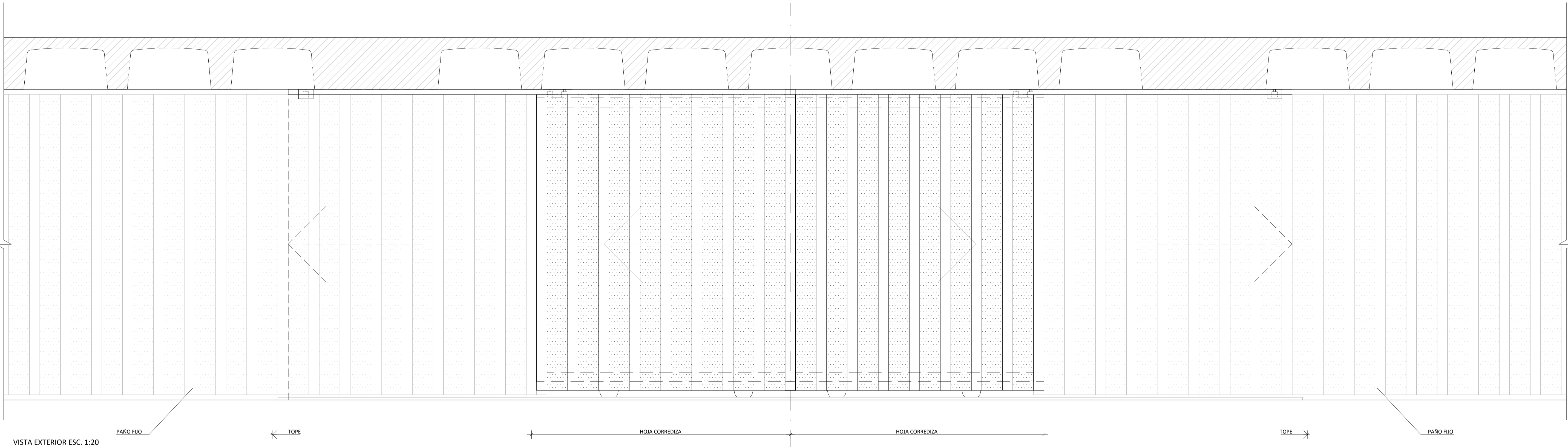
VISTA SUR
ESC. 1:250

VISTA NORTE
ESC. 1:250

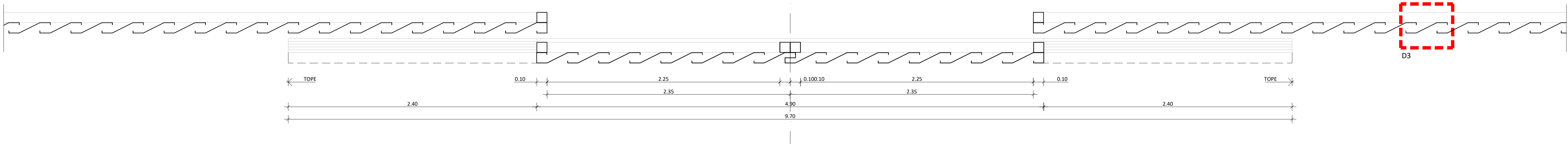


VISTA OESTE
ESC. 1:250

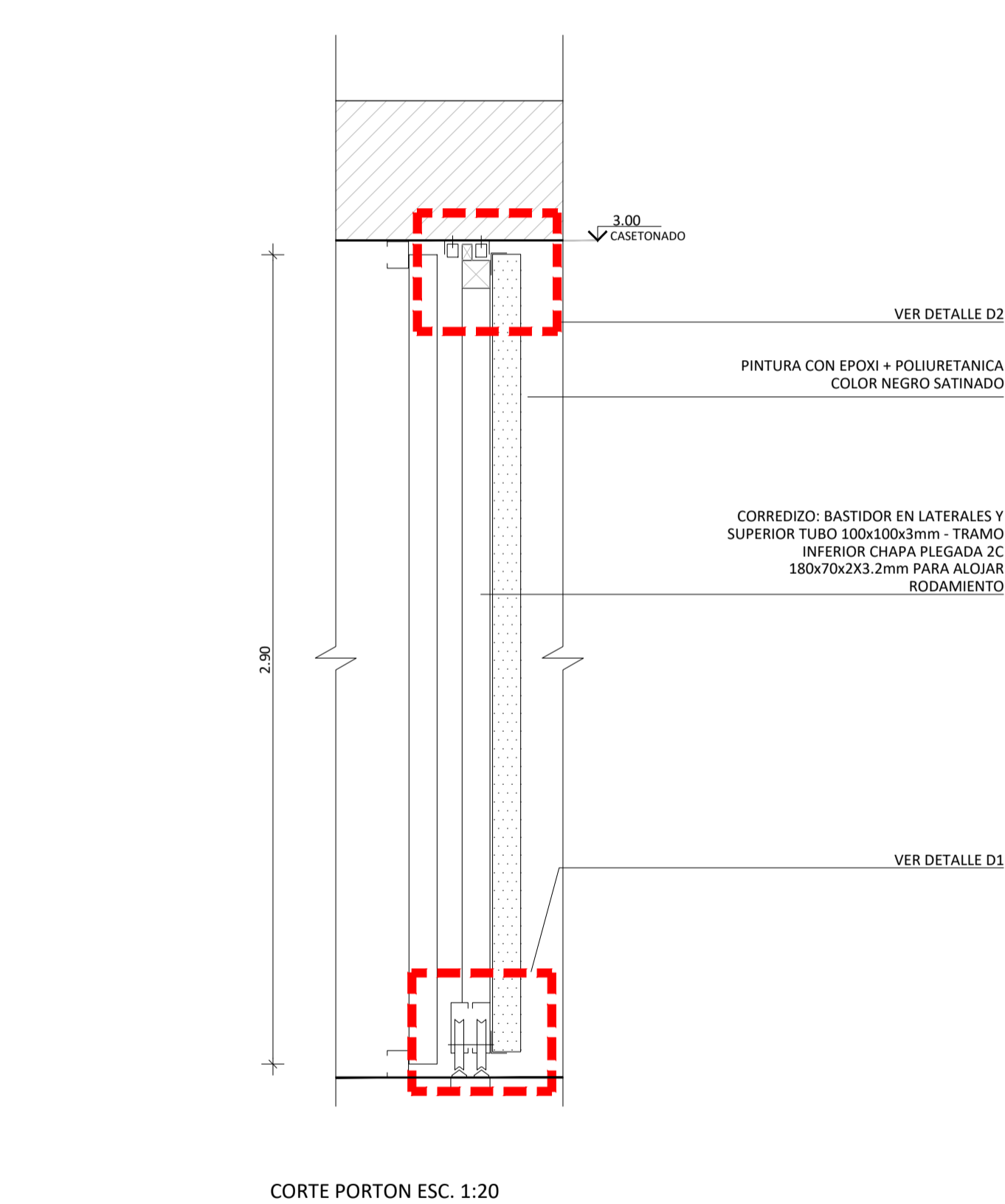
DETALLE PORTON PMP 01:



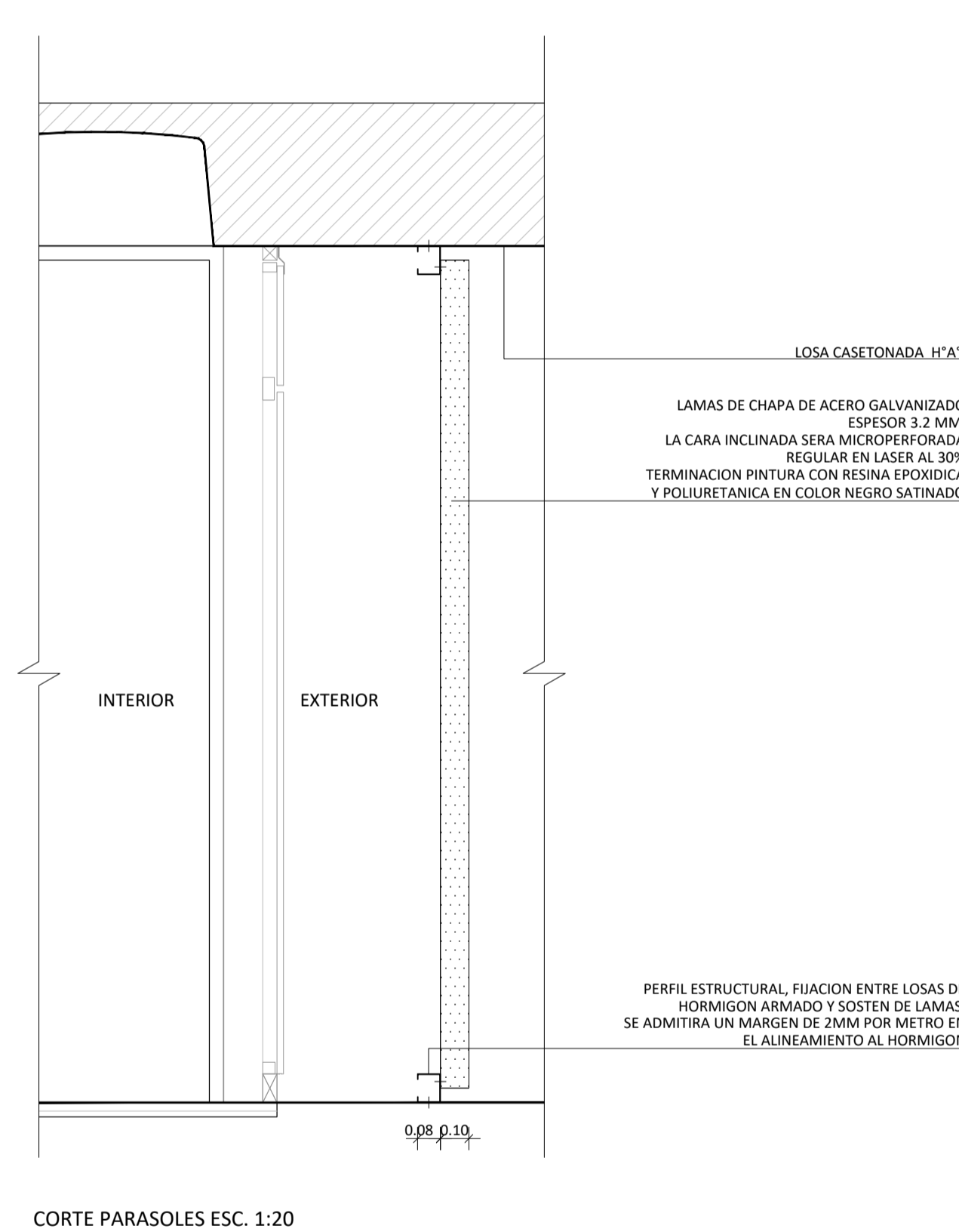
VISTA EXTERIOR ESC. 1:20



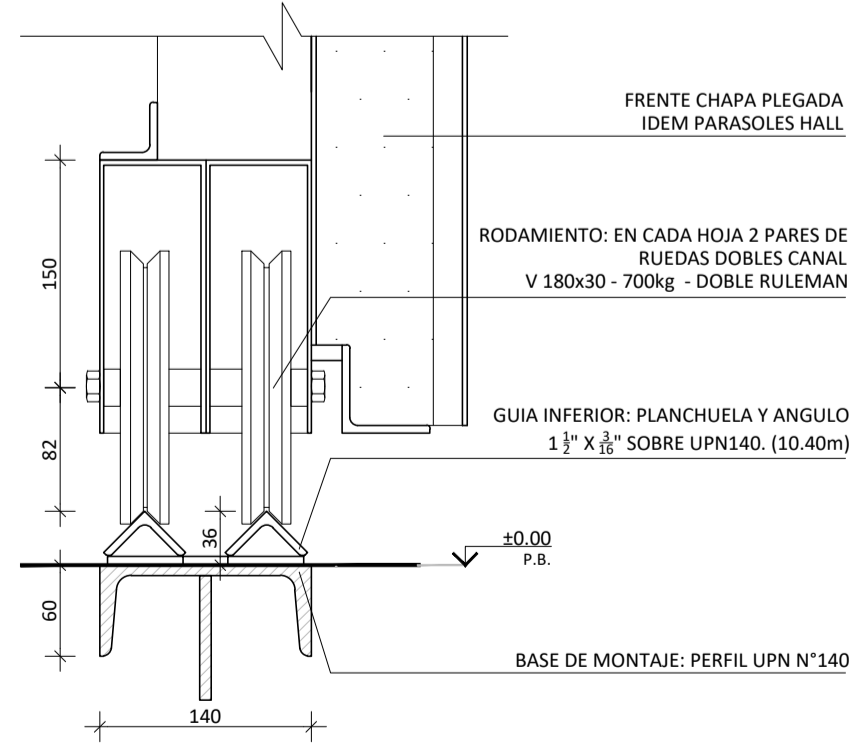
PLANTA ESC. 1:20



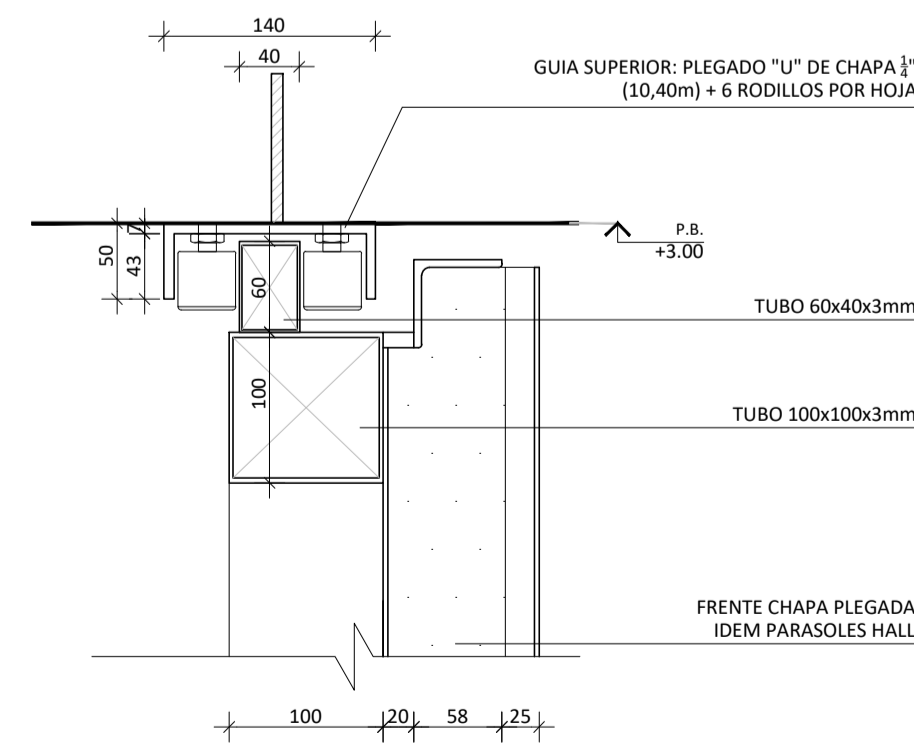
CORTE PORTON ESC. 1:20



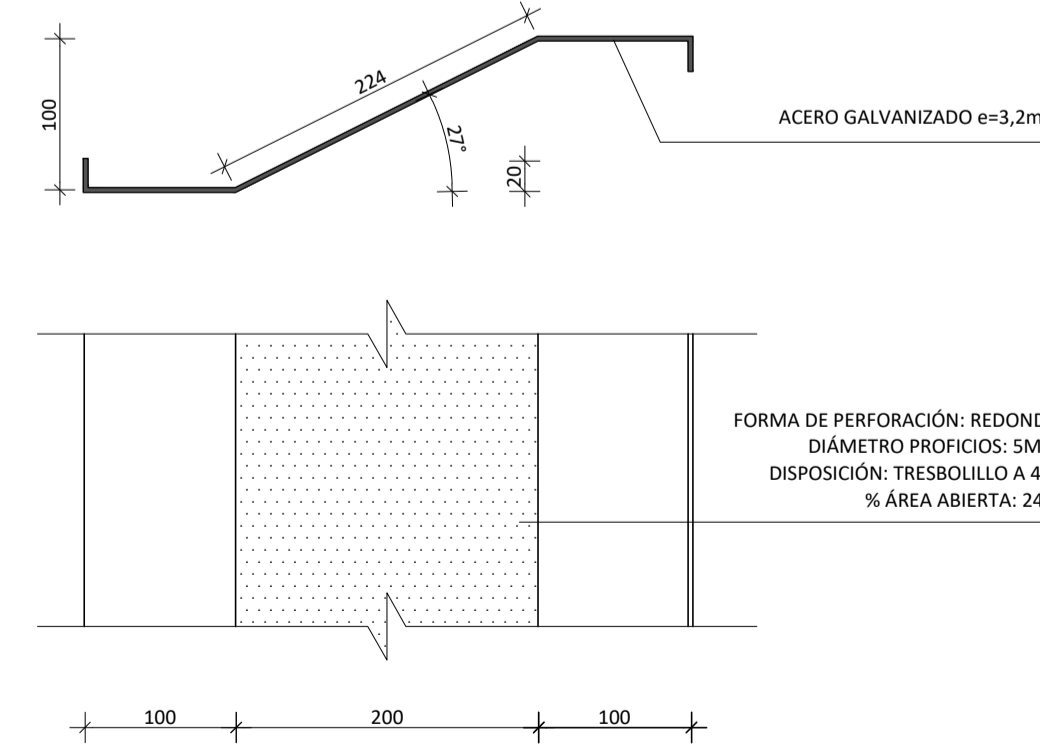
CORTE PARASOLES ESC. 1:20



D1: DETALLE ESC. 1:5




D2: DETALLE ESC. 1:5



D3: DETALLE LAMA ESC. 1:5

NOTA:
TODAS LAS MEDIDAS DEBERAN SER VERIFICADAS EN OBRA

| | | |
|---|---|---|
|  | UNIDAD EJECUTORA DE INFRAESTRUCTURA | OBRA 11_ESTACIÓN POLICIAL SANTA FE CENTRO |
| | SUBSECRETARIA TECNICA | UBICACION LUCIANO TORRENT Y PEDRO VITTORI |
| | ARQ. FRANCISCO QUIJANO | TIPO DETALLE PARASOLES |
| | DIRECCION PROVINCIAL DE OBRAS ING. FEDERICO ZEGNA RATA | PLANO PARASOLES 01 - PMP 01 |
| | DIRECCION PROVINCIAL DE PROYECTOS ARQ. JORGE GIUNTA | ESCALA: VARIAS FECHA: 04/2026 REVISION: 00 |
| | SUBDIRECCION GENERAL TECNICA ARQ. VERONICA LANZARO | 11_EP-PS.01 |